

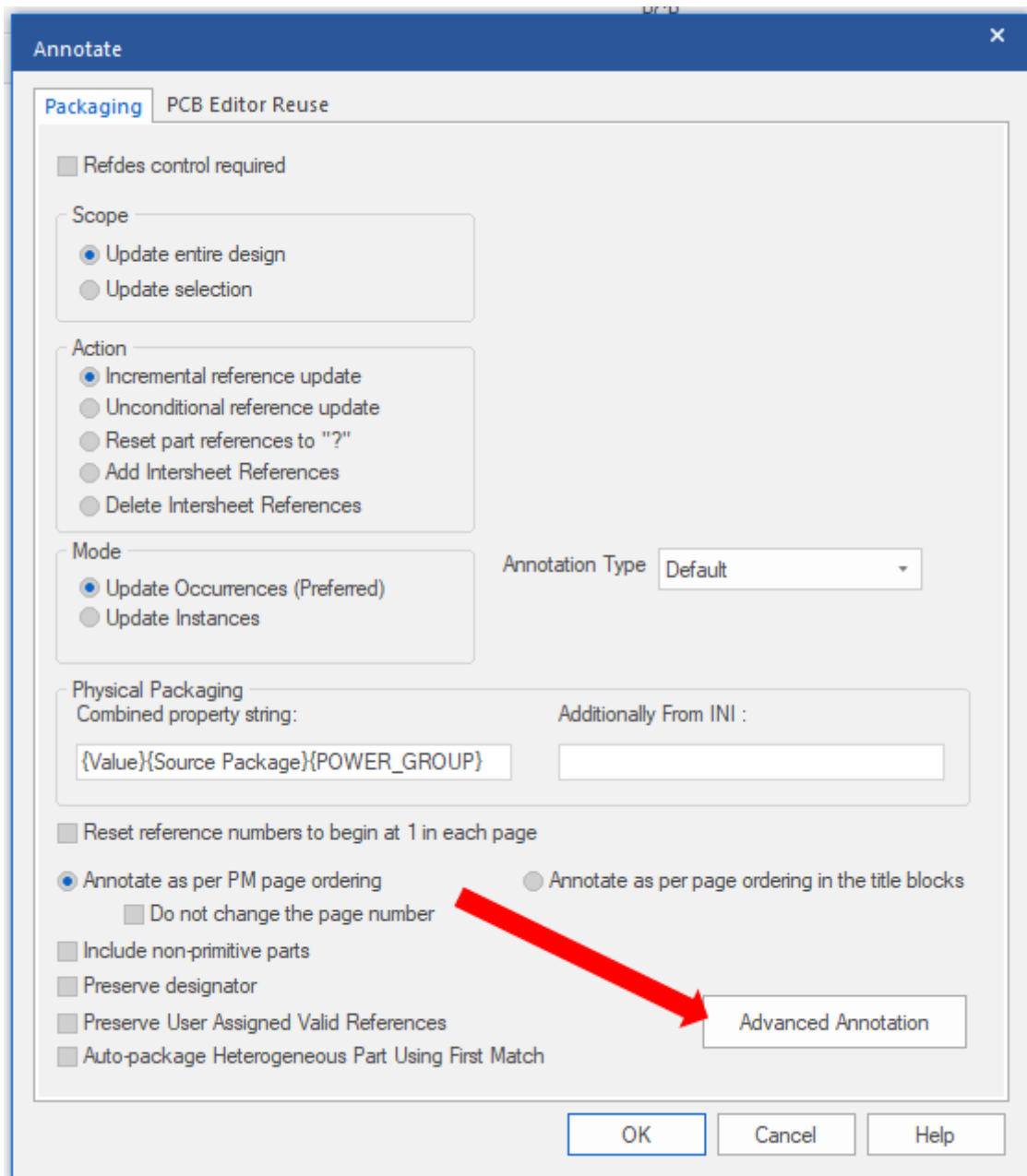


Advanced Annotation for OrCAD Capture

Advanced Annotation for OrCAD Capture

Advanced Annotation provides more control over the annotation of a design than the default RefDes Control functionality.

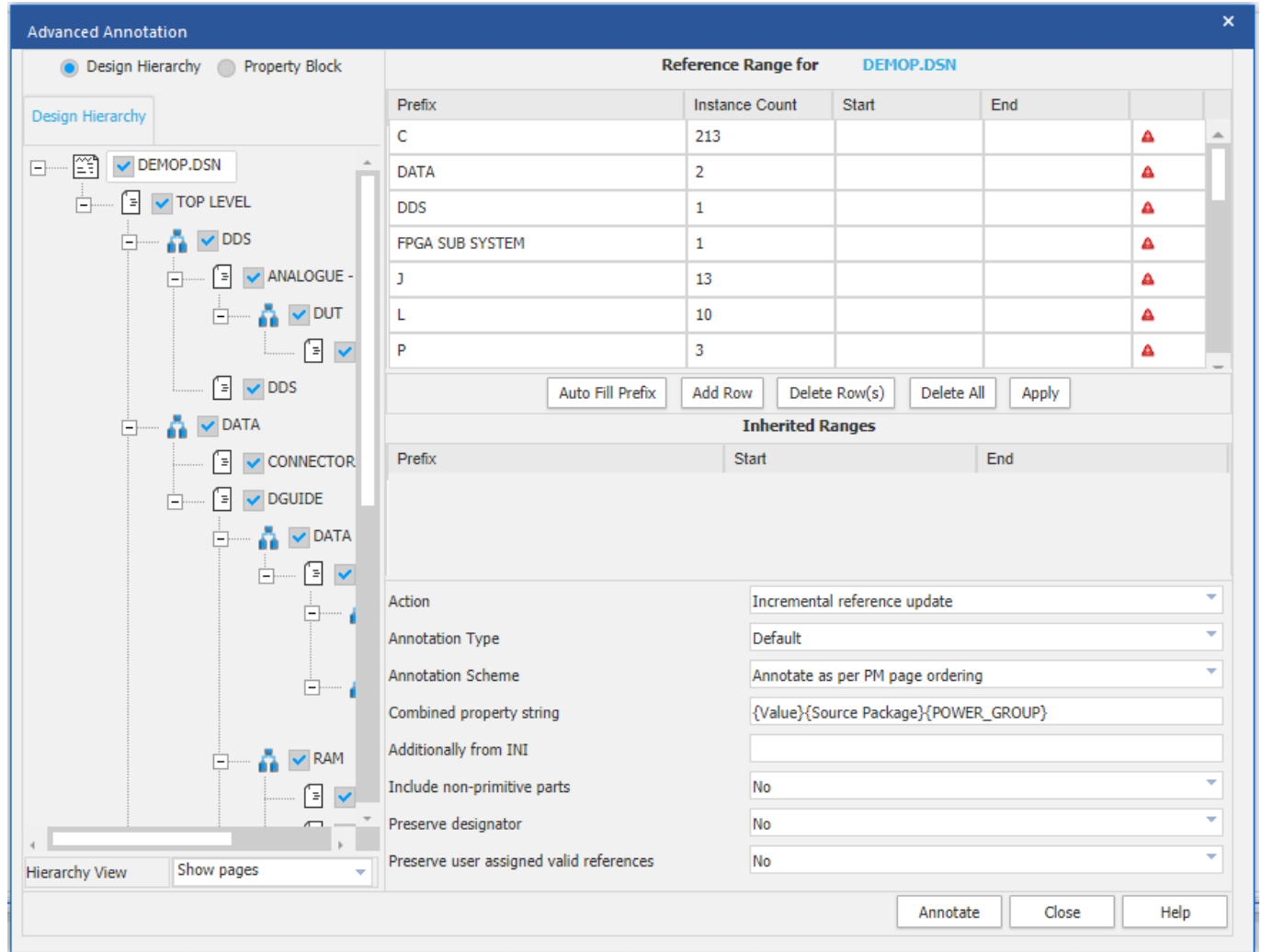
Select the DSN file entry in the Project Manager window and use Tools>Annotate and then the Advanced Annotation button to start the Advanced Annotation application for your design.



When the Advanced Annotation application opens, the “layout” of the design is shown on the left of the window and the annotation controls are shown on the right. Selecting the design will annotate the entire design, since all the lower level objects will be selected by default, these can be deselected by left-clicking the “tick” associated

with the selection (Page or Hierarchical Block). Selecting the design will have the effect of annotating the entire design, like the default annotation behaviour, the difference being that the ranges used for each of the RefDes prefixes can be determined.

The Auto Fill Prefix button will list which RefDes prefixes are used, and how many of each are in the design.

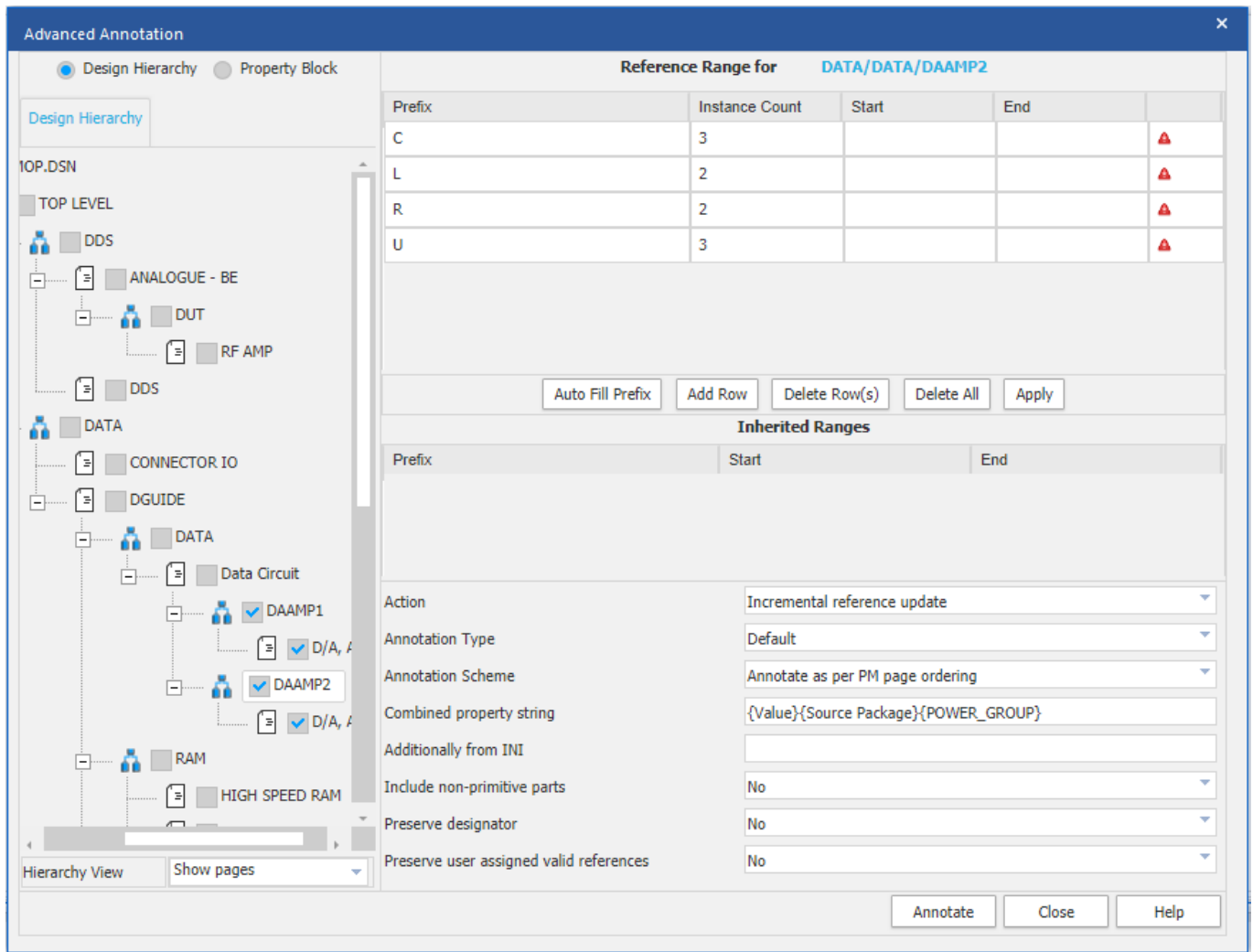


The design used in this example is hierarchical, so the names of the hierarchical blocks also appear in the list of RefDes prefixes. The “red triangle”, at the right-hand side indicates that the assigned range, currently “blank to blank”, is insufficient for the Instance count in the list. Now, for each Prefix, a Start / End range can be specified, this needs to be, at least, enough to contain the Instance Count. Unlike the default annotation behaviour, prefix C could start at 1001 and end at 1213, prefix J could start at 10 and end at 23, and so on. This wouldn’t be a likely application of Advanced Annotation, possibly shifting all the prefixes to have an offset of, say, 1000 might be more likely to merge two designs. You may also consider RefDes control per page, for example, so that page 1 starts at 1000, page 2 starts at 2000 and so on.

Users more commonly want to control the annotation of specific blocks, for hierarchical designs, and specific pages for flat designs.

In the following screen shot, the two DAAMP blocks have been selected. DAAMP1 is going to be annotated starting at 500 (to 549 which is much greater than the required range), shown in the screen shot, and DAAMP2 is going to be annotated starting at 550 (and ending at 599), not shown. The rest of the design is going to be re-

annotated, so prefix C will range from 1 to 207 because 6 of the prefix C parts are within the blocks being annotated with specific ranges.



This processing can be implemented for any of the selected blocks, or pages within the design. Note the following: any objects that are not selected for specific annotation will be annotated starting with 1 for each prefix; the ranges need to be enough for the prefix being annotated within the selection; a range specified at a higher level may conflict with a range at a lower level and result in the design not being completely annotated. In all cases, check the Session Log for any messages related to the annotation processing.

The following are trademarks or registered trademarks of Cadence Design Systems, Inc. 555 River Oaks Parkway, San Jose, CA 95134 Allegro®, Cadence®, Cadence logo™, Concept®, NC-Verilog®, OrCAD®, PSpice®, SPECCTRA®, Verilog®

Other Trademarks

All other trademarks are the exclusive property of their prospective owners.

NOTICE OF DISCLAIMER: Parallel Systems is providing this design, code, or information "as is." By providing the design, code, or information as one possible implementation of this feature, application, or standard, Parallel Systems makes no representation that this implementation is free from any claims of infringement. You are responsible for obtaining any rights you may require for your implementation. Parallel Systems expressly disclaims any warranty whatsoever with respect to the adequacy of the implementation, including but not limited to any warranties or representations that this implementation is free from claims of infringement and any implied warranties of merchantability or fitness for a particular purpose.